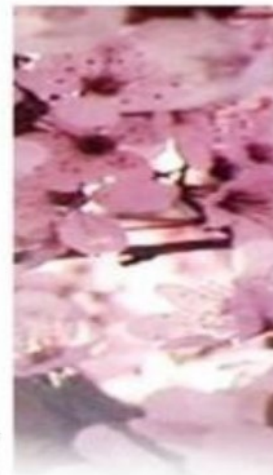




WinterSpring
and
Spirit of Resh Foundation



PRESENT

Loss to Legacy
A story circle

Six Week Group
Tuesdays
10am — Noon
May 2 — June 6, 2017

Call
WinterSpring
to register
541-552-0621

Loss to Legacy is a six-week class series offered in a partnership between **WinterSpring** and **Spirit of Resh Foundation**, in which participants will examine how to find and create meaning in response to the death of loved ones.

The program is divided into four sections: **Story; Reflection; Vision; and Action.**

Each section bridges right-brain and left-brain processes through exercises in class, and optional assignments given for between meetings. We will incorporate various forms of storytelling, inner-inquiry, and creativity—all designed to explore the true meaning of legacy (including those inherited and those we leave in our own wake).

Delving into principles and values learned from the person who died, as well as lessons learned through the encounter with death or the experience of loss and grief, participants will find new ways of expressing what matters most, thereby actively participating with their own legacy-in-progress.



WinterSpring
Facing Loss, Embracing Life Again—Together
PO Box 8169, Medford, OR 97501
541-552-0621 winterspring.org
Julie Lockhart, Executive Director

Pre-registration is required
Medford location

Cost: \$80



Spirit of Resh Foundation
PO BOX 1119
Jacksonville, OR 97530
541-708-1363
www.resfoundation.org
Lily Myers Koplan, Executive